



Quick Guide

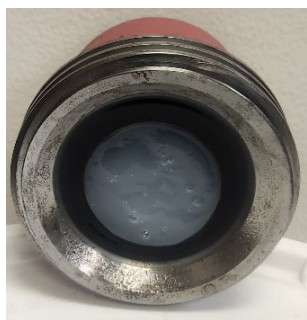
HDI Hammer Union Sensor

Installation and maintenance

When installing any HDI hammer union sensor (1502/ 2202), it is required to install the protective diaphragm in the stump and fill with thin hydraulic fluid (AW32 recommended) if stump is vertical or dielectric grease if stump is horizontal before putting the sensor on.



Vertical (Hyd. Fluid)



Horizontal (grease)

Ensure unit is reading 0 PSI without any applied pressure. Tighten the unit down on stump. You are now ready to read pressure.

When gauge is removed from the stump, inspect the diaphragm for any wear or deformations. It would be good practice to replace each time units are taken off. The diaphragm is cheap compared to the pill inside the sensor body.

When cleaning an all-in-one unit (1000P or 2000P) via pressure washing or anything remotely close, it would be a good idea to cover the unit with a 5-gallon bucket or some sort of splash guard to ensure the seals are not damaged with high pressure.

If the diaphragm ruptures and the base of the sensor gets clogged up for some reason, DO NOT dig inside the cavity with a screwdriver or pick. It would be advised to send back to us to clean by disassembling the unit's lower parts and most of the time able to save the pill. If it is punctured, it is not repairable.